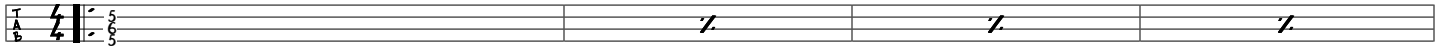


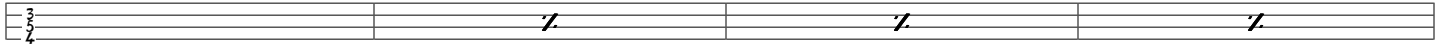
SWEET GEORGIA BROWN - W/ECONOMIC CHORDING

UKULELE ARRANGEMENT BY GERALD ROSS

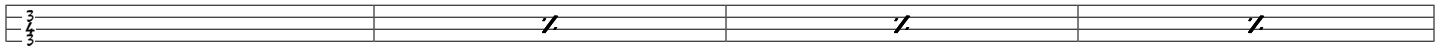
D7 (SHAPE1)



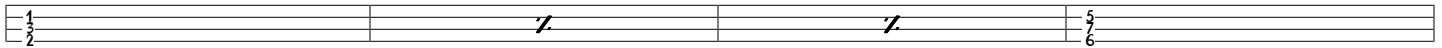
G7 (SHAPE2)



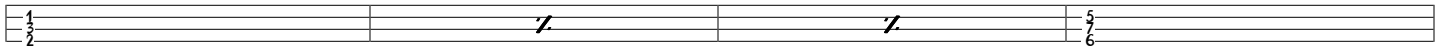
C7 (SHAPE1)



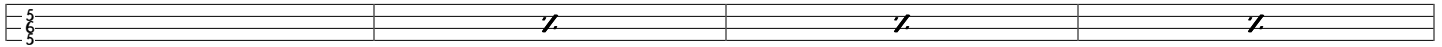
F7 (SHAPE2)



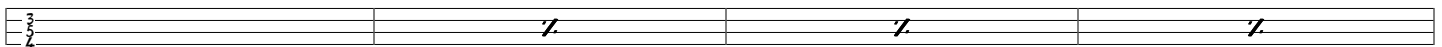
A7 (SHAPE2)



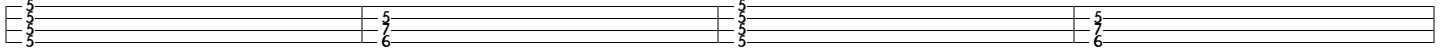
D7 (SHAPE1)



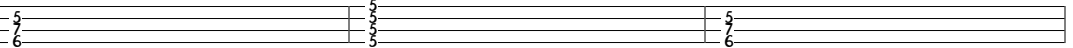
G7 (SHAPE2)



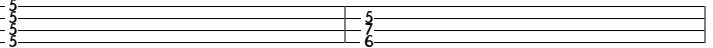
Dm7 (SHAPE3)



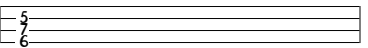
A7 (SHAPE2)



Dm7 (SHAPE3)



A7 (SHAPE2)



F7 (SHAPE1)



E7 (SHAPE1)



Eb7 (SHAPE1)



D7 (SHAPE1)



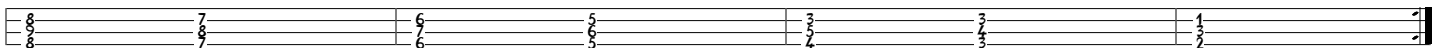
G7 (SHAPE2)



C7 (SHAPE1)



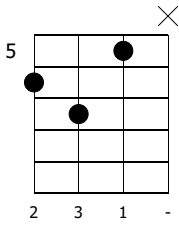
F7 (SHAPE2)



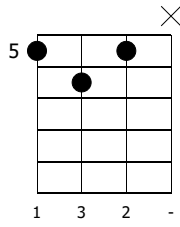
Jazzier Blues In A

Ukulele arrangement - Gerald Ross

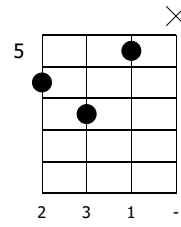
A7



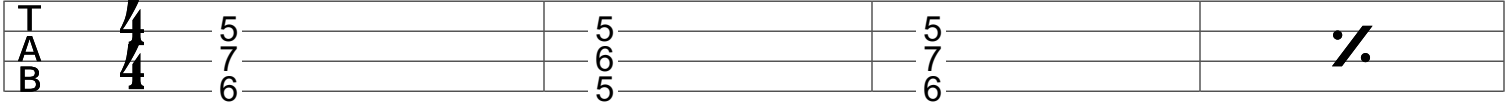
D7



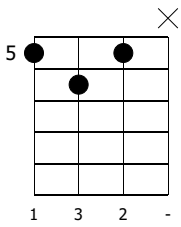
A7



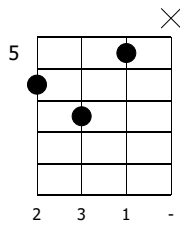
Ukul.



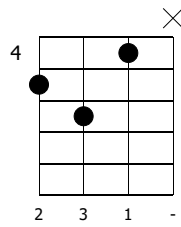
D7



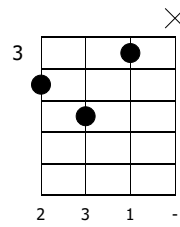
A7



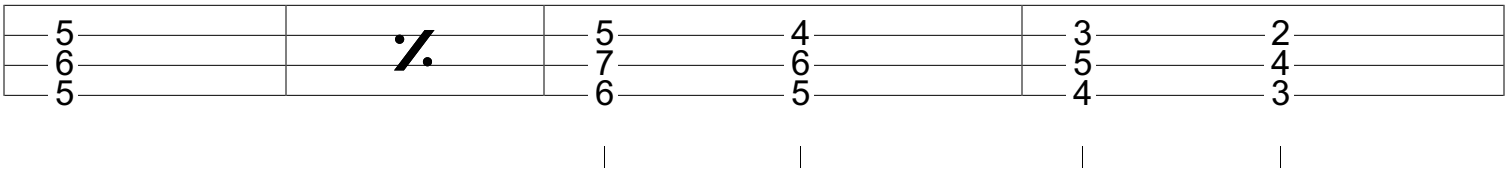
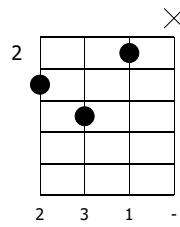
A^b7



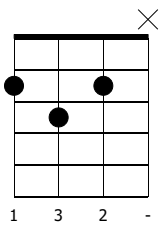
G7



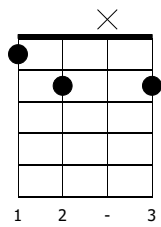
F[#]7



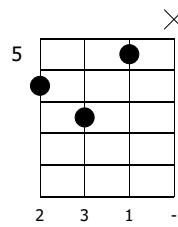
B7



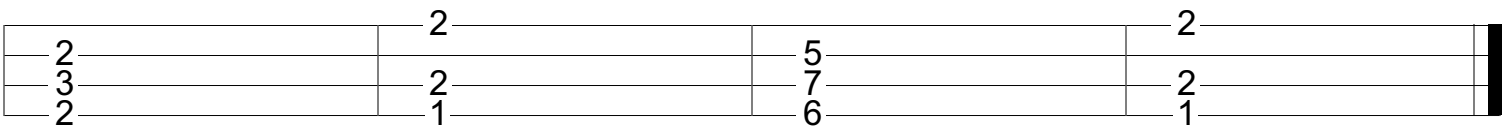
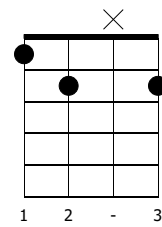
E7



A7



E7

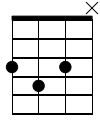


THREE POSITION BLUES

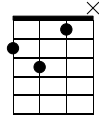
UKULELE ARRANGEMENT BY GERALD ROSS

POSITION 1

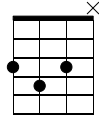
C7



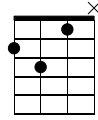
F7



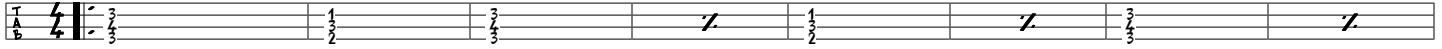
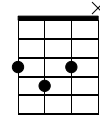
C7



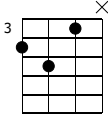
F7



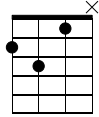
C7



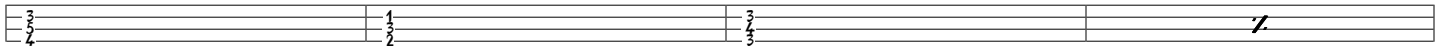
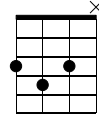
G7



F7

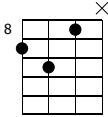


C7

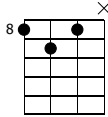


POSITION 2

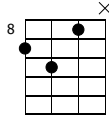
C7



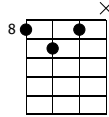
F7



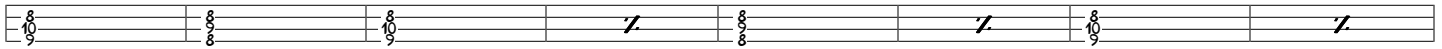
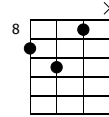
C7



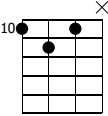
F7



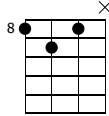
C7



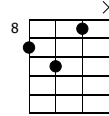
G7



F7

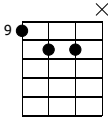


C7

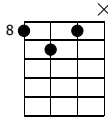


POSITION 3

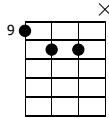
C9



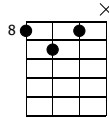
F7



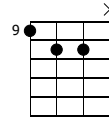
C9



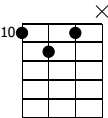
F7



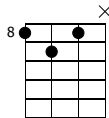
C9



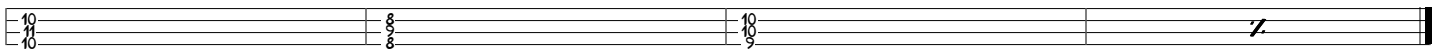
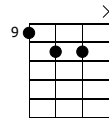
G7



F7



C9



SWEET SUE

(UKULELE ARRANGMENT: GERALD ROSS)
 (GCEA TUNING - KEY B FLAT - FORM AABA)

A

Cm7 F7 Cm7 F7 Bb Bdim7

UKUL.

Cm7 F7 Bb 1. Bdim7 Bdim7 2. Bb

B

Bb 9 A9 Ab 9 G9

Cm7 Bb DIM

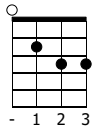
HONEYSUCKLE ROSE

(KEY F - AABA FORM)

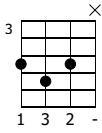
♩ = 120

A

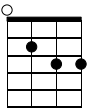
Gm



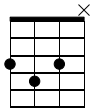
C7



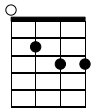
Gm



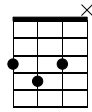
C7



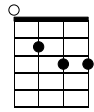
Gm



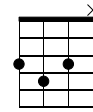
C7



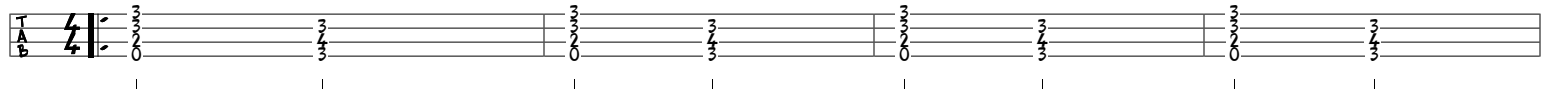
Gm



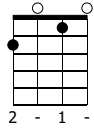
C7



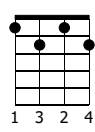
Ukulele



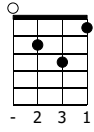
F



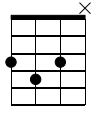
Fdim



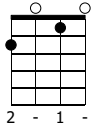
Gm



C7

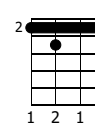


F

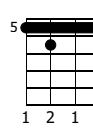


1.

Cdim

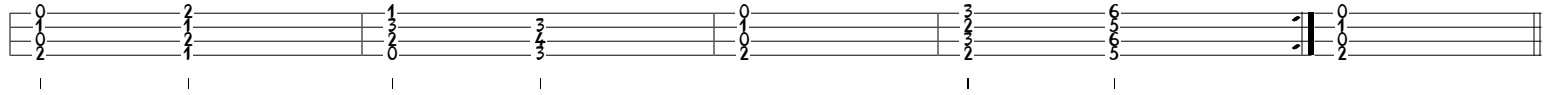
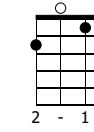


Cdim



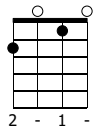
2.

F

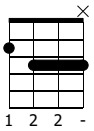


B

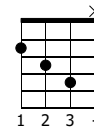
F



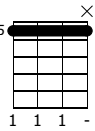
F9



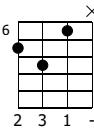
F(#9)



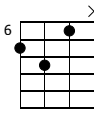
C6



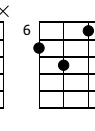
Bb7



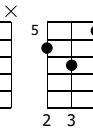
Bb7



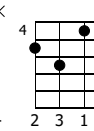
Bb7



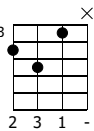
A7



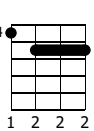
Ab7



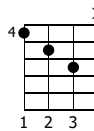
G7



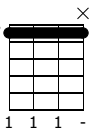
G6



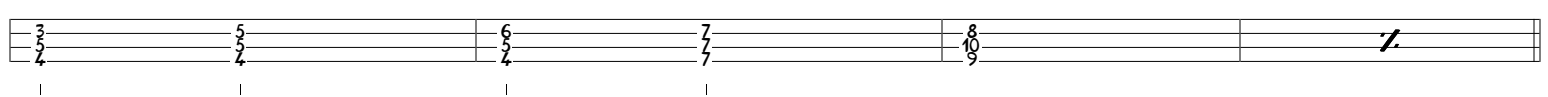
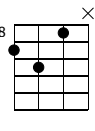
G(#9)



G6

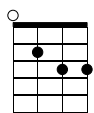


C7

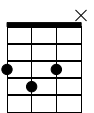


A

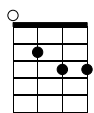
Gm



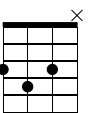
C7



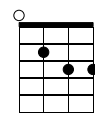
Gm



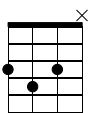
C7



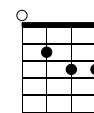
Gm



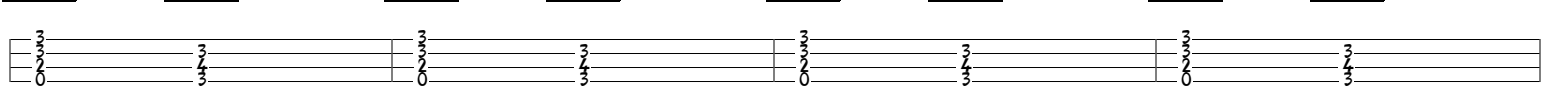
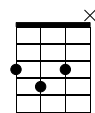
C7



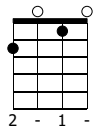
Gm



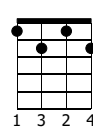
C7



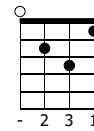
F



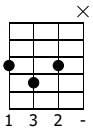
Fdim



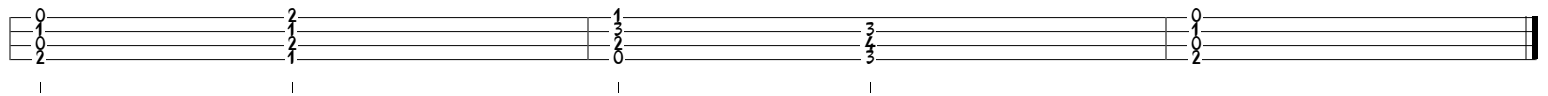
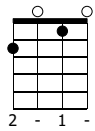
Gm



C7



F



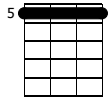
SATIN DOLL

UKULELE ARRANGEMENT - GERALD ROSS

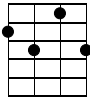
KEY OF C (GCEA TUNING) (AABA FORM)

A

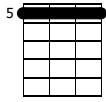
DM7



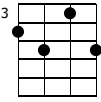
G7



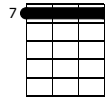
DM7



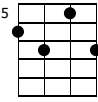
G7



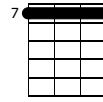
Em7



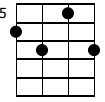
A7



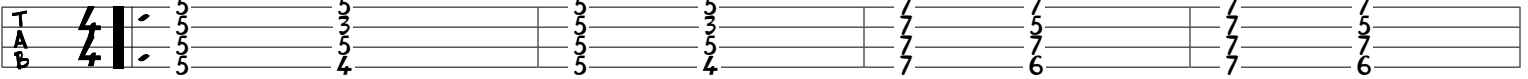
Em7



A7



UKUL:



CIGARETTE
BABY SHALL
TELEPHONE

HOLDER
WE GO
NUMBERS

WHICH
OUT
WELL

WIGS ME
SKIPPIN
YOU KNOW,

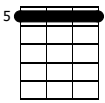
OVER HER
CAREFUL
DOIN' MY

SHOULDER,
AMIGO
RHOMBAS

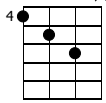
SHE
YOU'RE
WITH

DIGS ME
FLIPPIN',
ONO

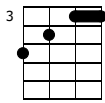
DM7



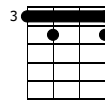
C# 13



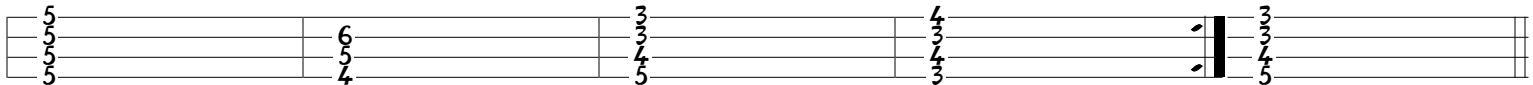
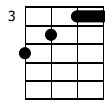
C



1.
C# DIM



2.
C



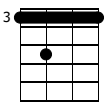
OUT CATTIN'
SPEAKS LATIN
AND THAT 'IN

THAT SATIN
THAT SATIN
MY SATIN

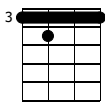
DOLL
DOLL.
DOLL.

B

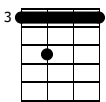
C7sus



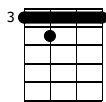
C7



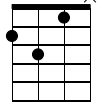
C7sus



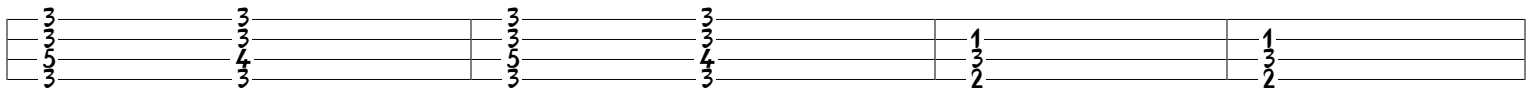
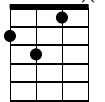
C7



F7



F7



SHE'S NOBODY'S

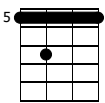
FOOL SO I'M

PLAYING IT

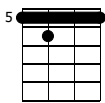
COOL AS CAN

BE

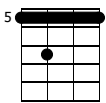
D7sus



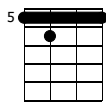
D7



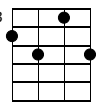
D7sus



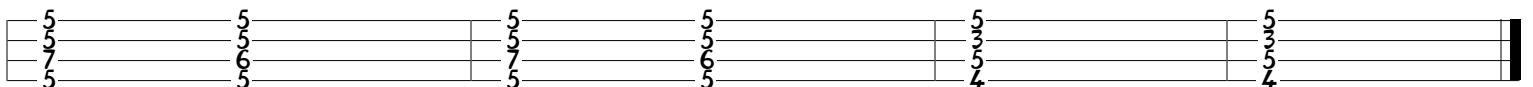
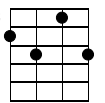
D7



G7



G7



I'LL GIVE IT A

WHIRL BUT I

AIN'T FOR NO

GIRL CATCHING

ME,

SWITCH A ROONEY!

COPYRIGHT 2012

ALL RIGHTS RESERVED - GERALD ROSS WWW.GERALDROSS.COM